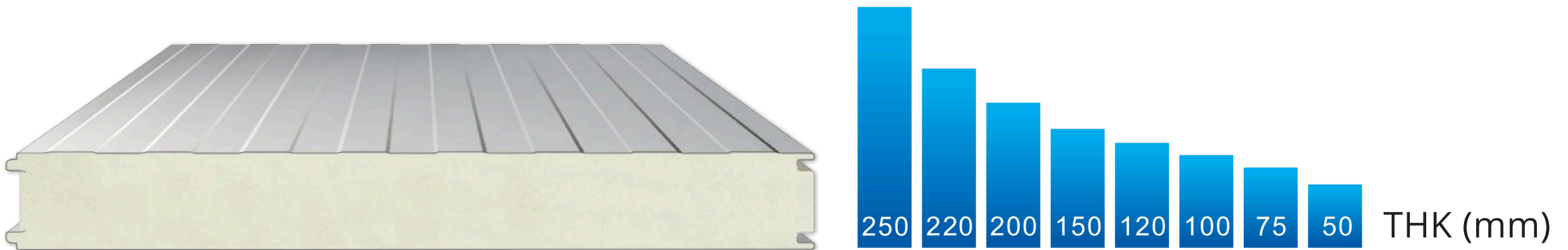


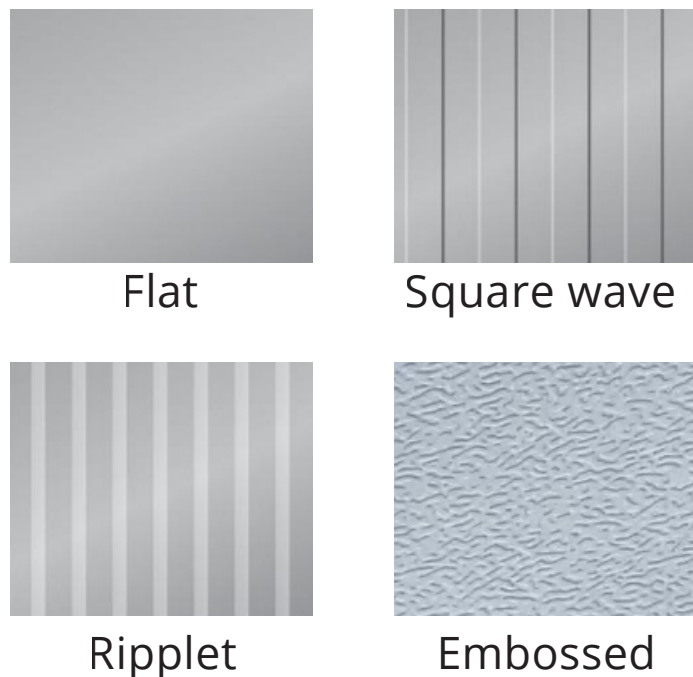
PIR COLD STORAGE PANEL

LIONCROWN's PIR cold storage panels are manufactured using state-of-the-art Italian OMS foaming equipment, which employs an advanced fourth-generation fully automatic polyurethane sandwich panel continuous production line. This production line enables high-pressure and high-temperature automatic continuous foaming, guaranteeing a uniform foaming process with a closed-cell rate of over 98% for the product. These panels offer a lower thermal conductivity ($\leq 0.022/W(m \cdot K)$), resulting in superior insulation performance. Additionally, they boast a fire resistance rating of up to B1 level.



Color

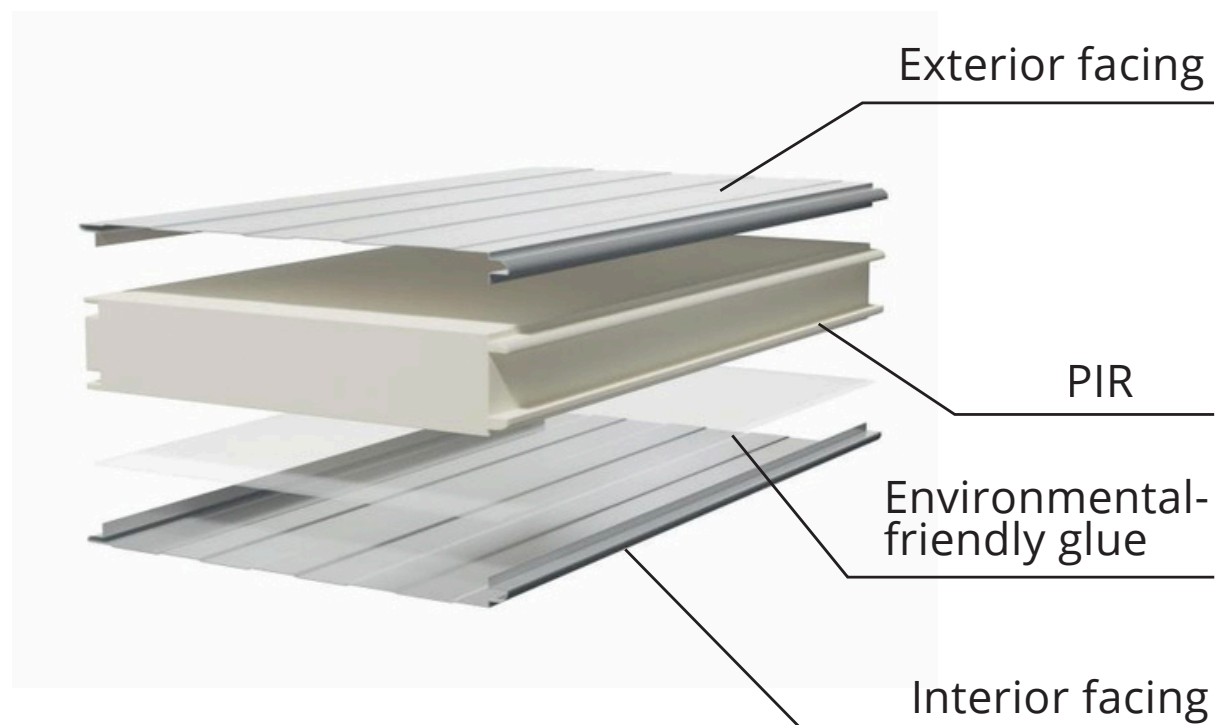
Selectable Surface Effects



Surface

Color pre-coated steel plate/ Al-Mg-Mn sheet/
Stainless steel plate/ Galvanized sheet

Breakdown Drawing



Ultra-confidential

Weather-resistant sealant on interfaces enhances airtightness and durability.

Polyurethane foam in grooves ensures seam sealing and insulation.

PIR core material is flame-retardant (B1 level), high-strength, non-absorbent, and blocks heat transfer efficiently.

LIONCROWN's Prefabricated Corner Panel

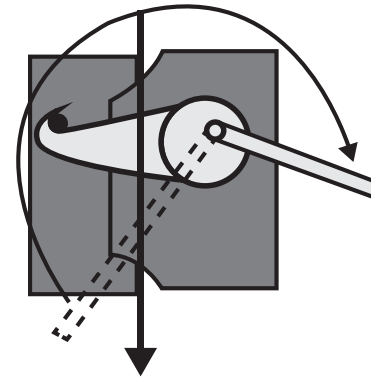
- Ensures tighter joints between panels, preventing air leakage and external infiltration.
- Improves installation efficiency and quality.

LIONCROWN's Prefabricated L-shaped Slot

- Ensures the sealing and insulation of the connection between wall and roof panel.
- Shortens the construction period.
- Ensures construction accuracy,
- Saves installation and operation costs.

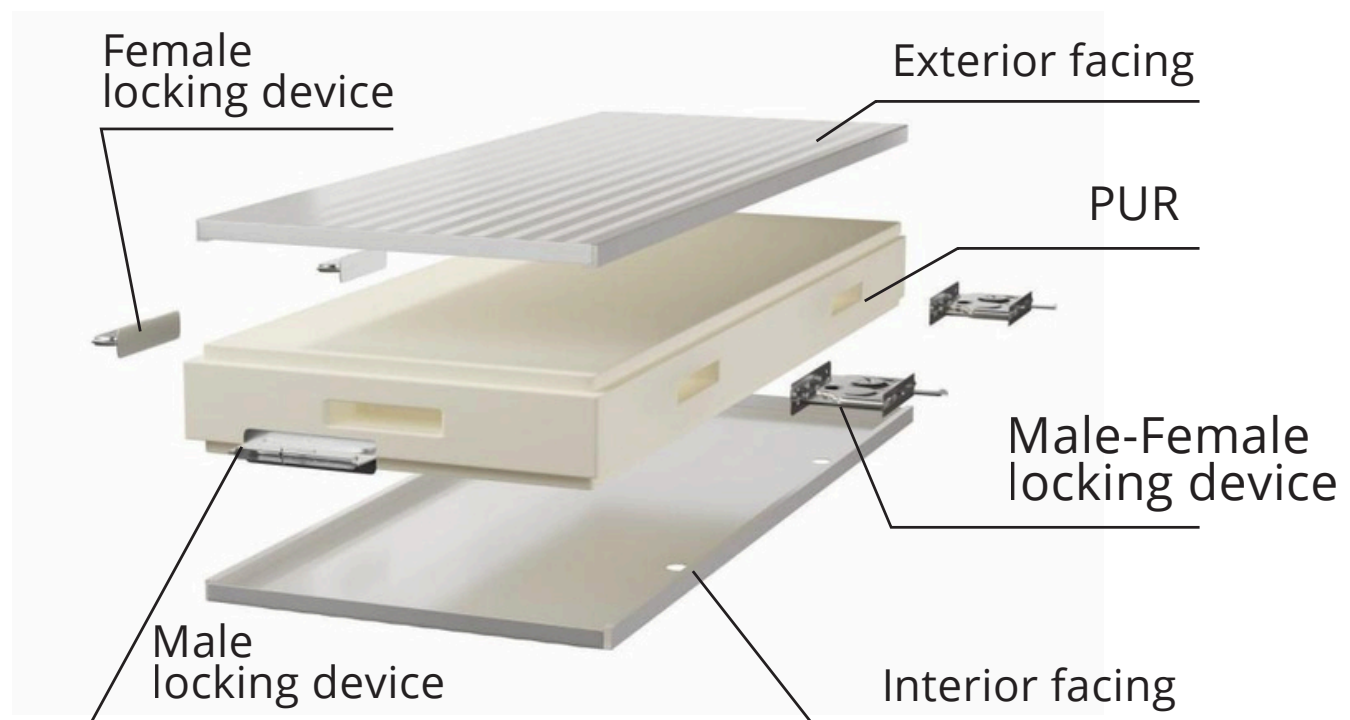
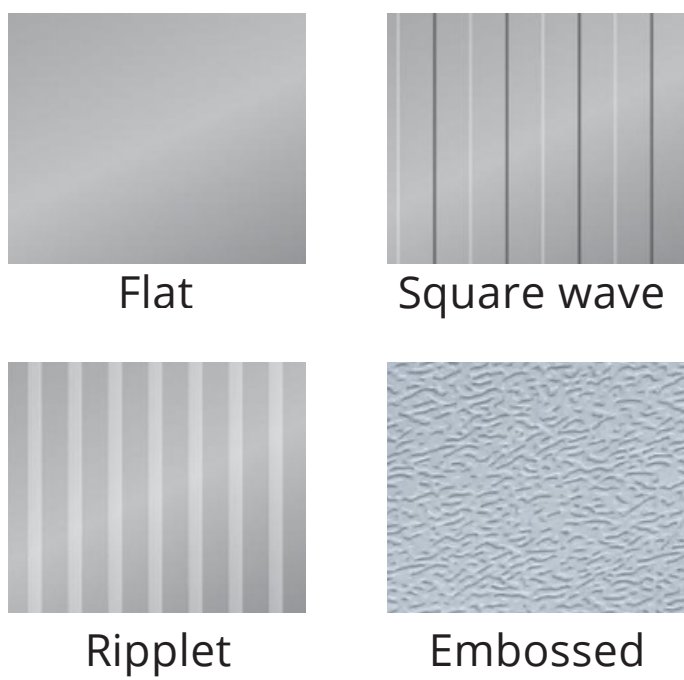
PUR COLD STORAGE PANEL

LIONCROWN's PUR cold storage panels are crafted utilizing PUR core material and are custom-manufactured in various sizes through mold-based production techniques. Locking devices are integrated and placed around the core panel during the manufacturing process, facilitating straightforward assembly. These panels can achieve a maximum length of 8 meters, making them particularly suitable for small-scale and non-standard engineering projects. LIONCROWN utilizes imported foaming equipment boasting a thermal conductivity of $\leq 0.026/W(m \cdot K)$ and a fire resistance rating of up to B2, guaranteeing exceptional product quality and performance.



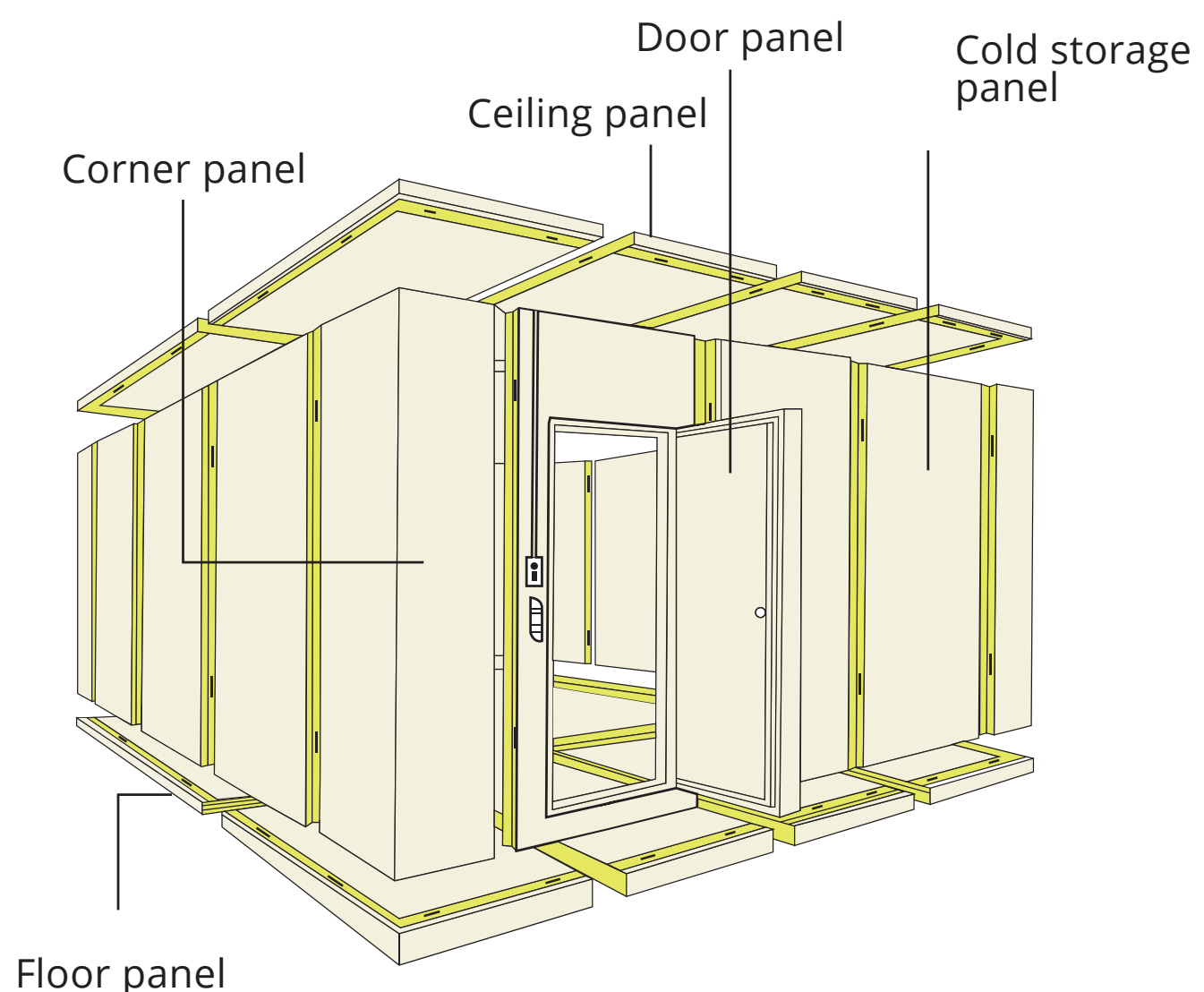
Surface Color pre-coated steel plate/ Al-Mg-Mn sheet/ Stainless steel plate/ Galvanized sheet

▶ Selectable Surface Effects ▶ Breakdown Drawing



▶ Disassembly Diagram of Cold Storage

- Ideal for a wide range of cold storage sizes and shapes, particularly in situations with on-site modifications or space limitations.
- Offer customizable panel sizes to accommodate personalized installations.
- The installation is simpler, requiring no complex machinery. Additionally, it demands lower levels of worker skill and allows for easier disassembly and reinstallation.



PUR COLD STORAGE DOOR

LIONCROWN's cold storage doors, boasting exceptional insulation and sealing capabilities, maintain consistent temperatures within cold storage facilities. Crafted from high-strength materials such as aluminum alloy, steel plate, and premium-quality polyurethane, these doors are offered in a range of styles including single, double, sliding, hinged and other configurations. Additionally, all types are available with manual or electric controls, providing both ease of operation and enhanced safety.



Manual sliding door



Manual sliding door (double-door)



Automatic sliding door



Automatic sliding door (double-door)



Semi-embedded manual hinged door



Semi-embedded manual hinged door (double-door)



Fully embedded manual hinged door (double-door)

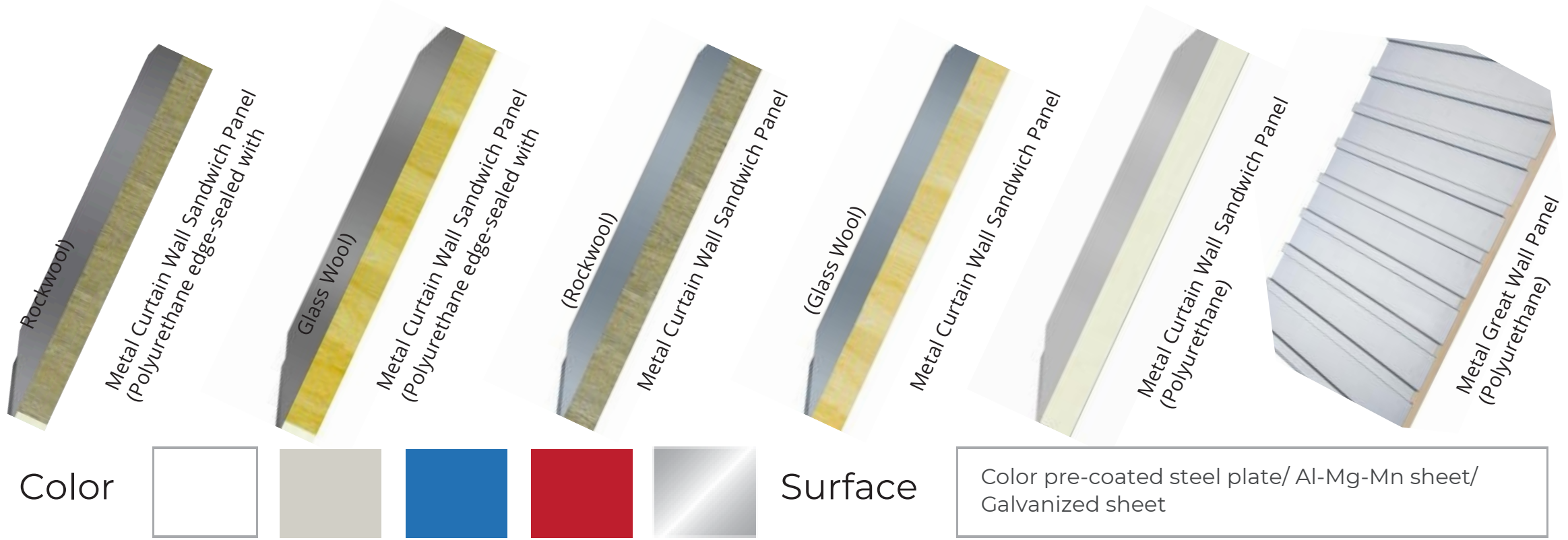


Air-conditioned sliding door

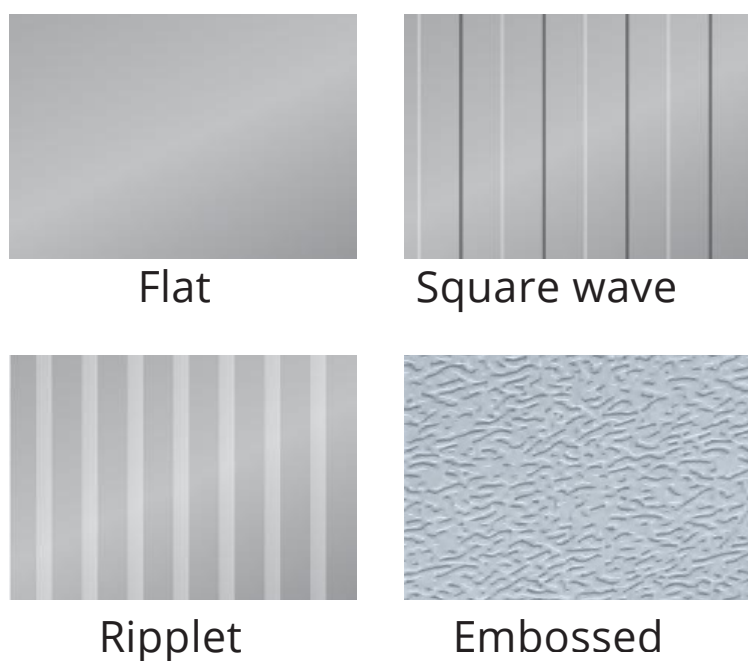
Item	Technical Requirement
Temperature Allowance	-35°C ~ +160°C
Thickness Range	75 / 100 / 120 / 150 / 200 mm
Facer Material	Stainless steel or color pre-coated steel
Core Material	Polyurethane
Sealing Material	TPE rubber or silicone
Door Frame Material	Aluminum alloy (anodized and anti-corrosion treated) some models include plastic materials
Heating Method	Both the door frame and the door leaf have heating wires totaling 2 sets of heating wires, with a power of 25-75W (configured according to the operating temperature).
Safety Devices Optional	Emergency escape lock (Allows individuals unlock the door inside and escape.)
Configuration	Anti-fog tempered glass window (optional)
Power supply	220V/50HZ (for heating wires)

METAL CURTAIN WALL SANDWICH PANEL

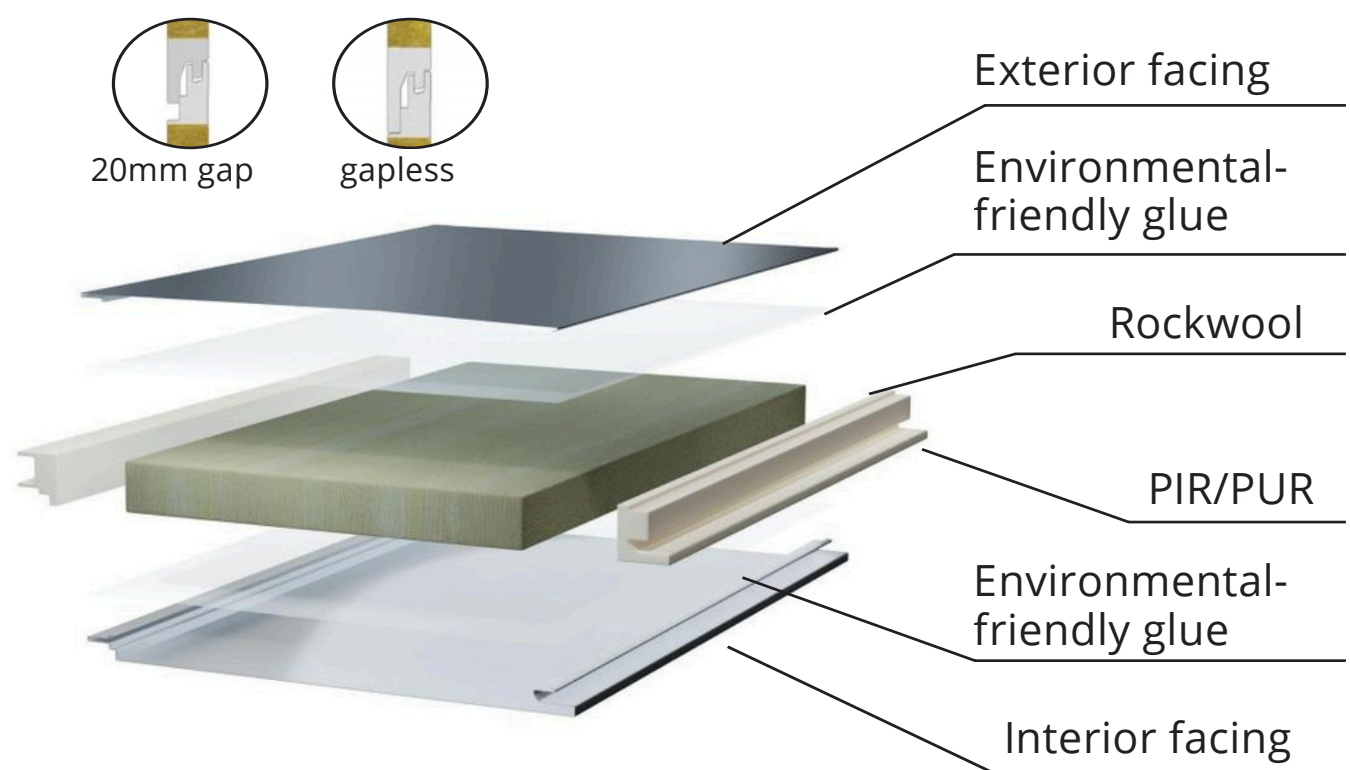
LIONCROWN's polyurethane sealed rock wool sandwich panel features a rock wool core material with polyurethane edge sealing. This effectively combines the non-combustibility and high temperature resistance of rock wool with the insulation and durability of polyurethane. It has A-grade fire resistance, a thermal conductivity coefficient of $\leq 0.042/W(m \cdot K)$, good sound absorption, excellent load-bearing capacity, high bending strength, water resistance, rot resistance, wide temperature tolerance, and easy installation.



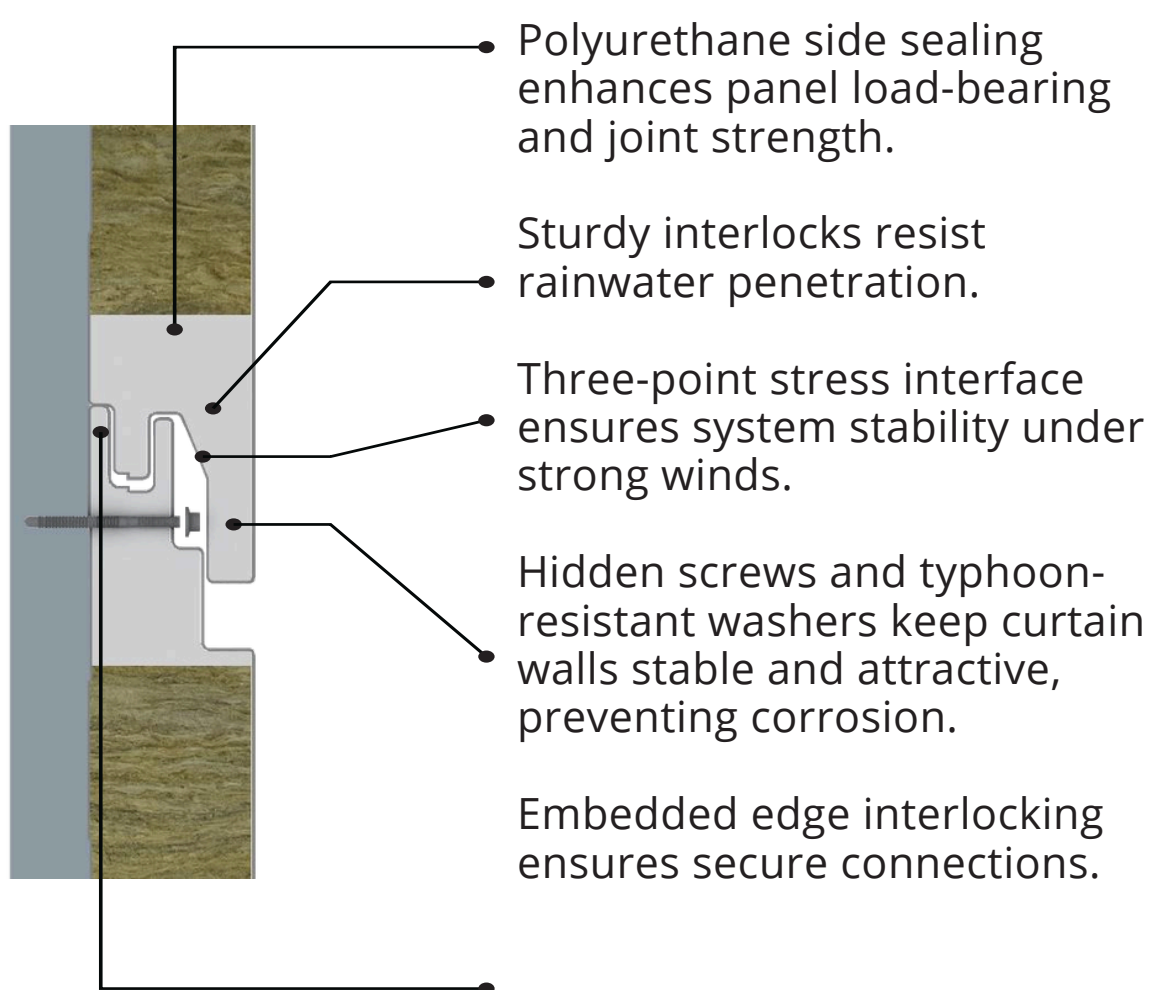
Selectable Surface Effects



Breakdown Drawing



Stable Waterproof Interlocking Structure



Four-Side Interlocking Curtain Wall Sandwich Panel



• Sealing with galvanized plates and flanges fully seals the core, ensuring wall panel airtightness, watertightness, and insulation.

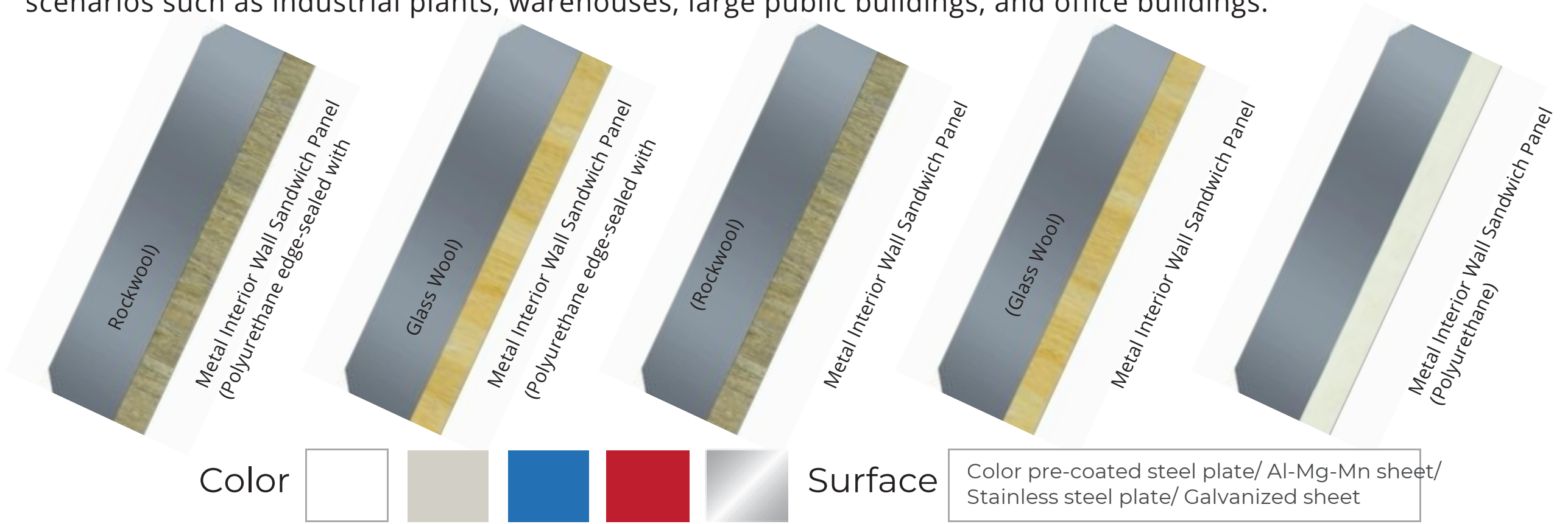
Corner and Curved Panel Solutions



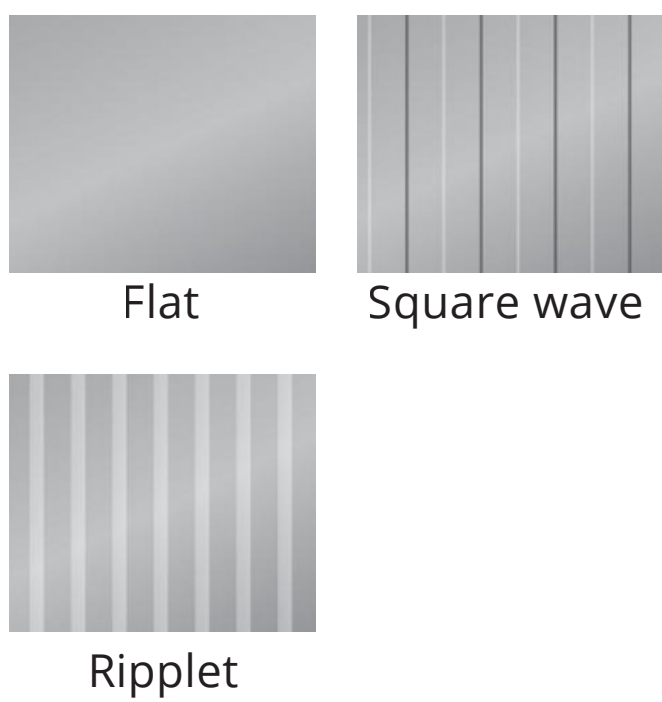
• LIONCROWN offers customized panels in various shapes for different building needs.

METAL WALL SANDWICH PANEL

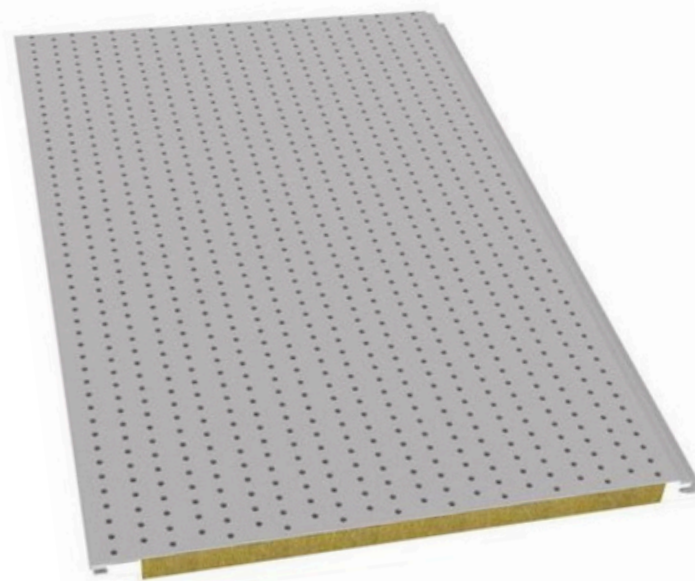
LIONCROWN's metal interior wall sandwich panel, with its outstanding thermal insulation, sound insulation, and fire resistance, as well as its lightweight, low building load, easy installation, and reusable advantages, significantly saves construction and operating costs. It provides an ideal internal partition and wall solution for a variety of building scenarios such as industrial plants, warehouses, large public buildings, and office buildings.



Selectable Surface Effects

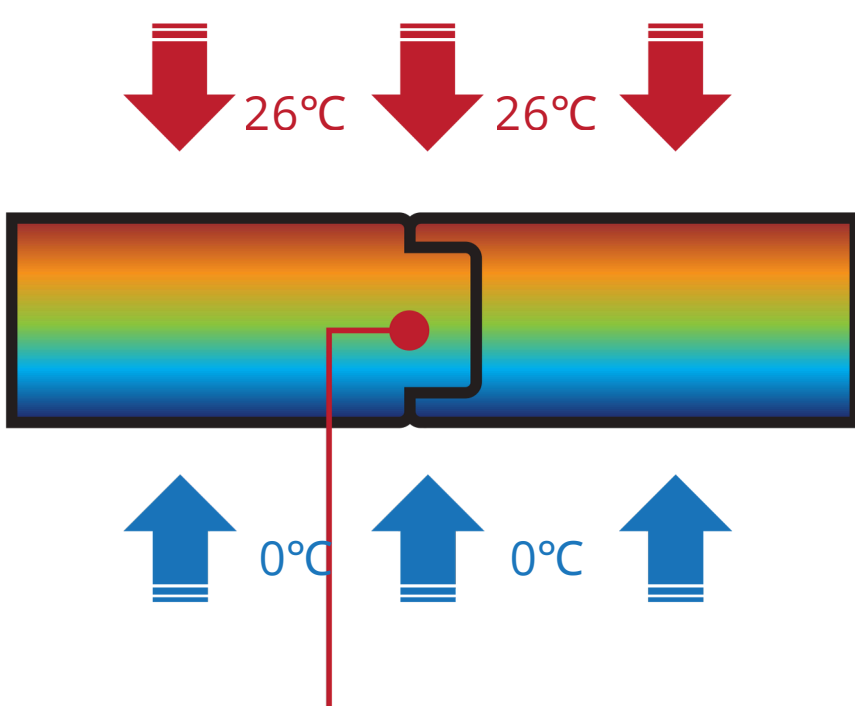


Sound Absorption System Solutions



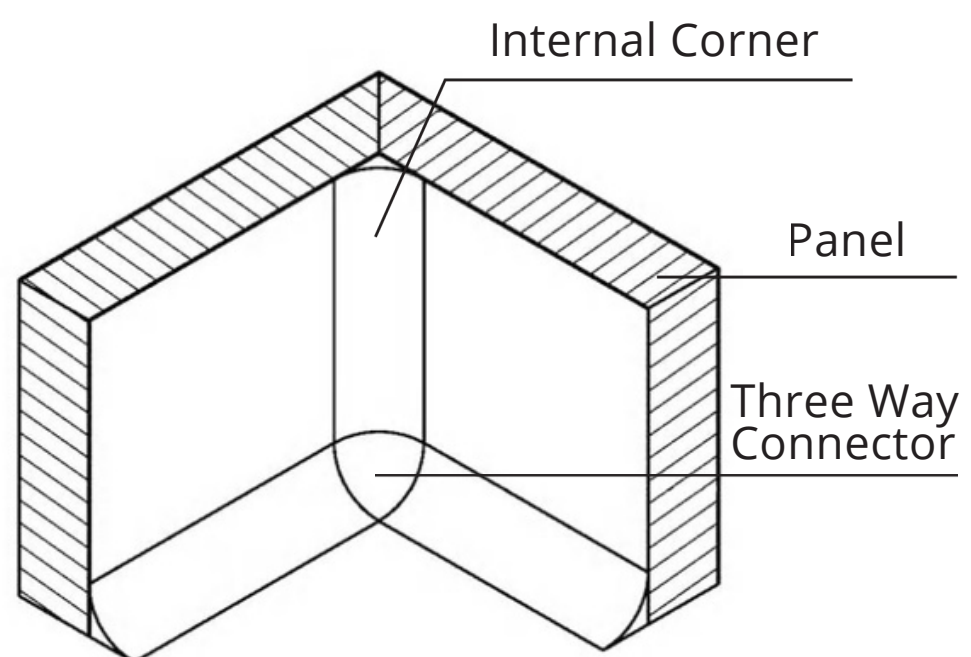
- Perforated metal steel plates with inorganic sound-absorbing materials.
- Provided excellent sound absorption and noise reduction.

Thermal Insulation Interlocking Structure



LIONCROWN's inner wall panels have an insulation-filled structure with a balanced thermal bridge design, preventing condensation and mold, extending building life, and reducing energy consumption.

Key Points for Installing Interior Wall Sandwich Panels



Integrating specially designed corner panels and matching aluminum profile connectors can improve installation efficiency, enhance building aesthetics, simplify cleaning processes, effectively avoid hygiene blind spots, and meet the dual needs of practicality and aesthetics.

MECHANICAL PURIFICATION BOARD

Mechanical purification boards are made of color coated or stainless steel plates as the surface layer (upper and lower layers), with different core materials and high-strength adhesives in the middle. A kind of wall and ceiling panels required for cleanroom through continuous automated molding and rolling composite.

Width	1150mm
Thickness	50-125mm

Convenient installation

Strong load-bearing capacity

Soundproofing function

Fireproof and heat-insulating

Optional Core Materials

Glass Magnesium Hollow	Rock wool glass magnesium (Density: 60-120kg/m ³)	Magnesium oxysulfide	Rock wool (Density: 60-120kg/m ³)
Porpor EPS (Density: 20-25kg/m)	Polyurethane	Paper honeycomb	Silicate rock (Density: 60-80kg/m ³)

MANUAL PURIFICATION BOARD

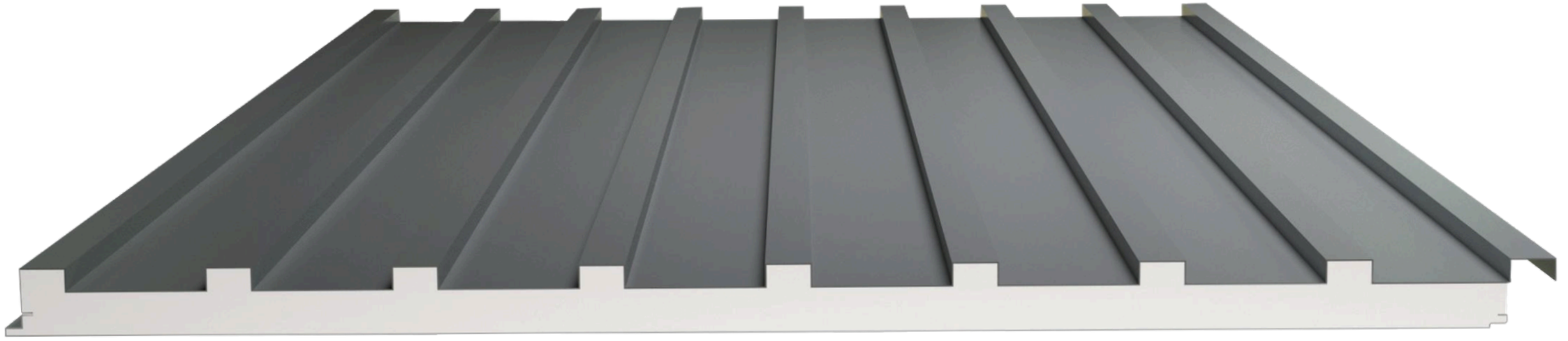
Width	300-1180mm
Thickness	50/75/100mm
Length	Whitin 6000mm

Basic version

Antibacterial version

Antibacterial manual purification boards are available, suitable for aseptic environment requirements.

POLYURETHANE GREAT WALL PANEL



With a high-performance PU core with premium metal cladding, delivering superior thermal insulation, waterproofing, and fire resistance, our panels ensure optimal thermal performance, easy installation, minimal waste, and unmatched durability for modern facades and roofs.

▶ Application



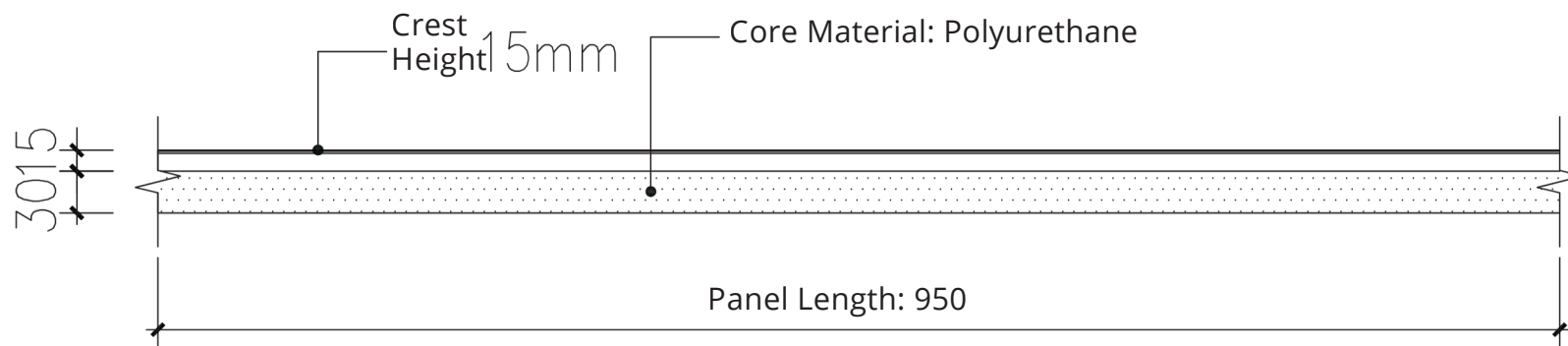
Sunlight Room



Villa Hotel



Outdoor Pavilion

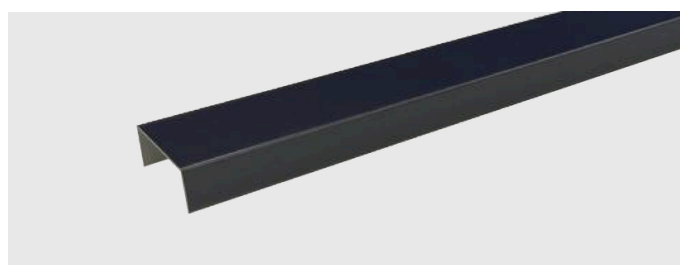


Parameter	Profile	Material: Al-Mn-Si	
Thickness of Facing (mm)	Concave & Convex(0.4-1.0) Flat/Rib(0.3-1.0)		
Thickness (mm)	30/50	Flame Retardancy	B1/B2/B3
Closed Cell Ratio	≥97%	Thermal Conductivity	PIR ≤0.022 PUR 0.022-0.026

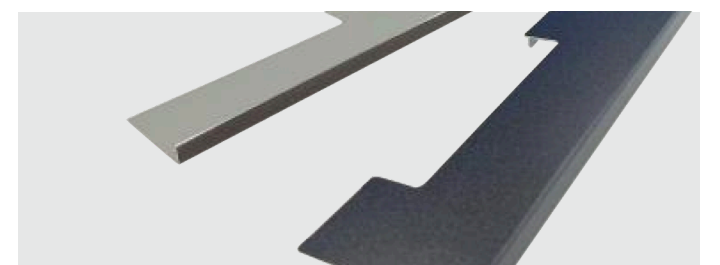
▶ Accessories



Starter strip



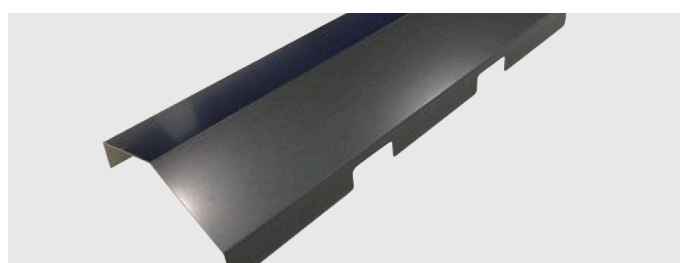
U-channel



Edge trim



Wall flashing



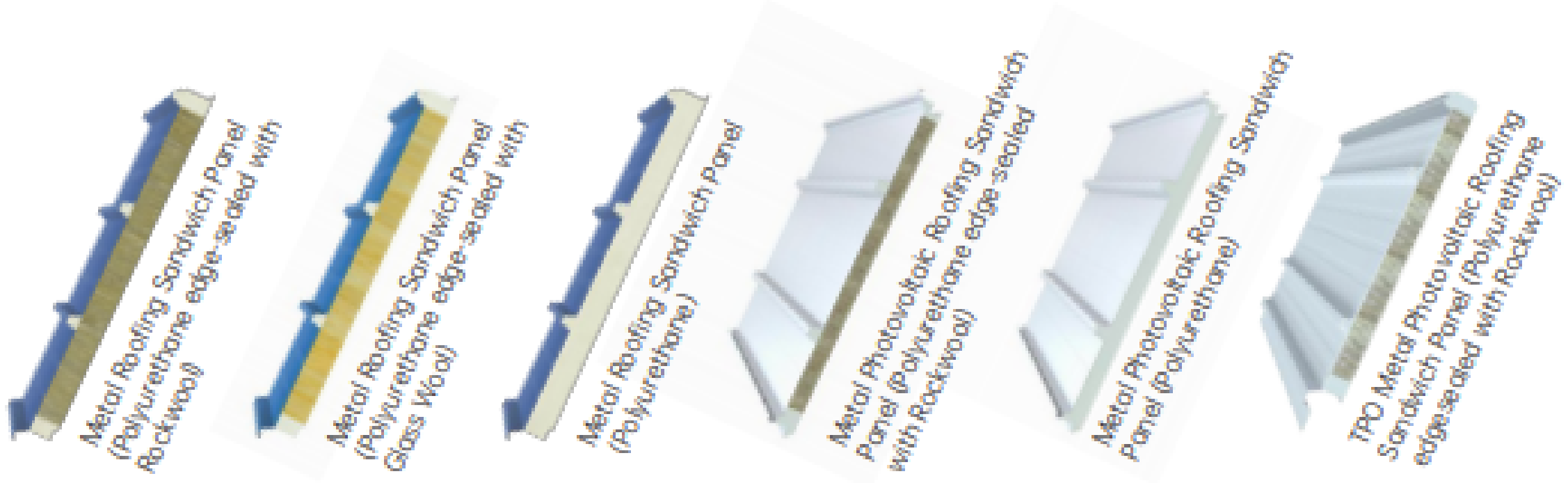
Ridge cap



Side edge trim

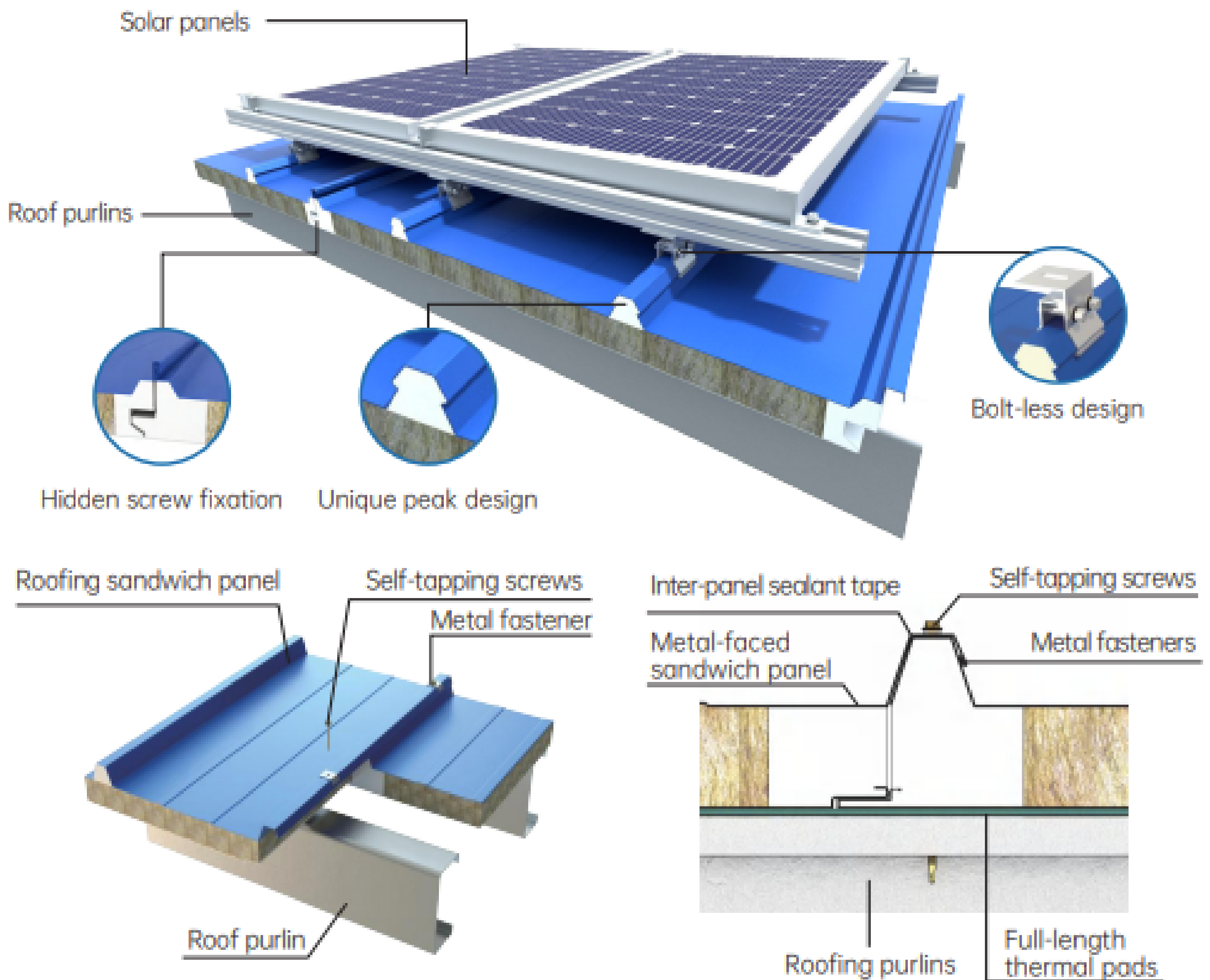
METAL ROOFING SANDWICH PANEL

LIONCROWN's metal roofing sandwich panels use high-efficiency insulation core materials and durable metal facings, providing excellent thermal insulation, fire resistance, and water-proof performance. This ensures the stability and durability of the roof system, significantly improves building energy efficiency, reduces energy consumption, and is suitable for a variety of applications including industrial buildings, commercial facilities, and public buildings.



Color

Surface Color pre-coated steel plate/ Al-Mg-Mn sheet/ Stainless steel plate/ Galvanized sheet



APPLICATION



Biotechnology Project

AGRICULTURE AND BREEDING INDUSTRY



Xuanbao Food Project

FOOD PRODUCTION WORKSHOP



YURUN Group Project

FOOD REFRIGERATED WAREHOUSE



Meituan Group Project

COLD CHAIN LOGISTICS WAREHOUSE



SF Logistics Project

LOGISTICS AND WAREHOUSE INDUSTRY



Semiconductor Project

ELECTRONICS AND TECHNOLOGY INDUSTRY



Chinese Academy Of Sciences Project

CRYOGENICS AND HYDROGEN ENERGY



Baiyun Airport Project

AIRCRAFT MAINTENANCE FACILITY